



# HUNTER'S *View*



## **BORAH**

2,680 SF / 4 Bed / 3.5 Bath

## SITE PLAN

PHASE 1 : ARTIST RENDERING



Frost Creek's Clubhouse and Restaurant

### Your New Base Camp

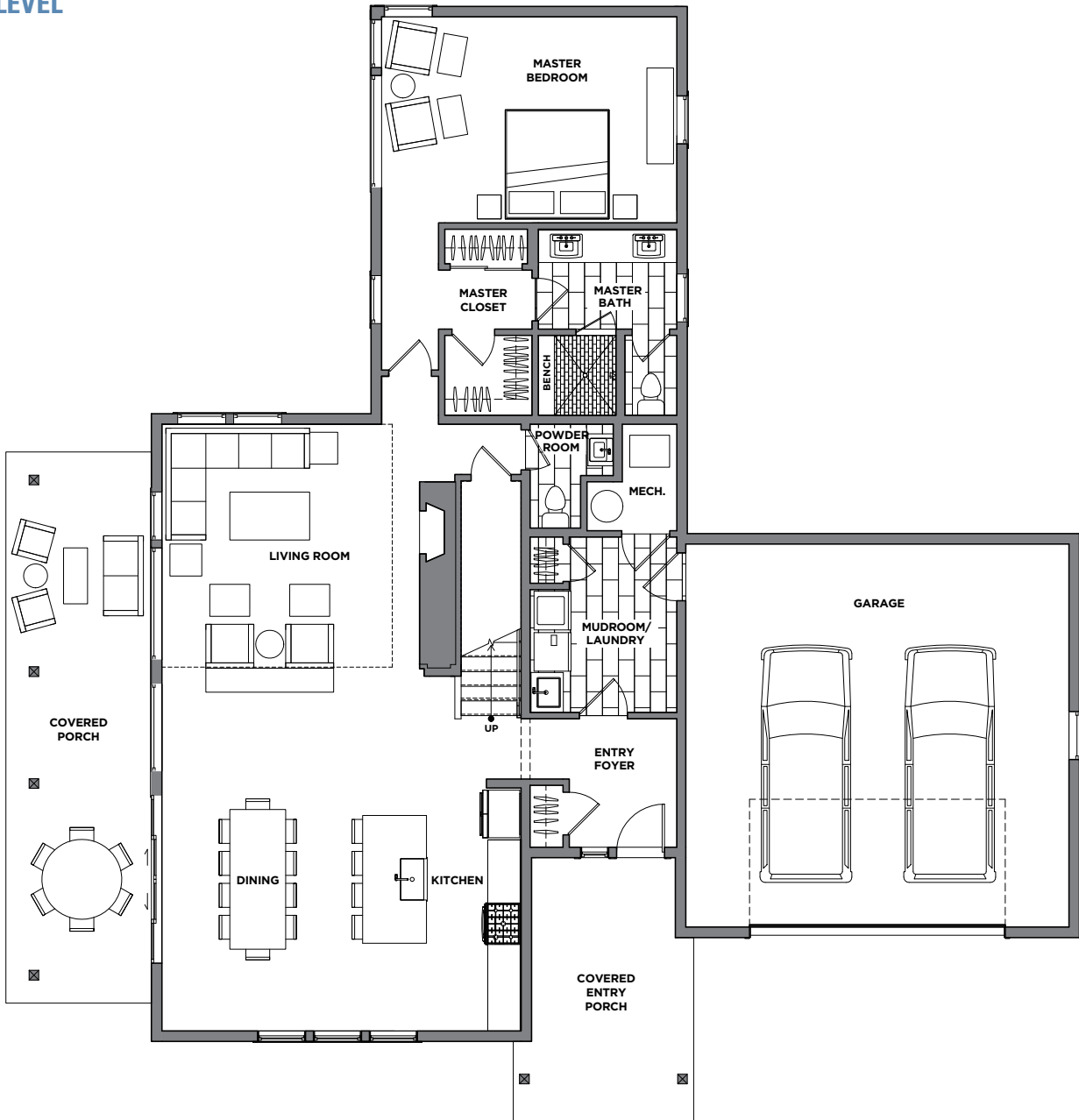
Nestled on 81 acres of land, surrounded by pristine, protected wilderness, awaits an extraordinary living experience. Hunter's View - Frost Creek's newest real estate offering - is a thoughtfully designed neighborhood of new construction homes, with direct access to the many year-round activities that both Frost Creek and the surrounding Vail Valley have to offer. With generous lot sizes up to an acre or more, Hunter's View is designed to foster community while maintaining the serenity that defines life at Frost Creek.



# BORAH

2,680 SF / 4 Bed / 3.5 Bath

## MAIN LEVEL

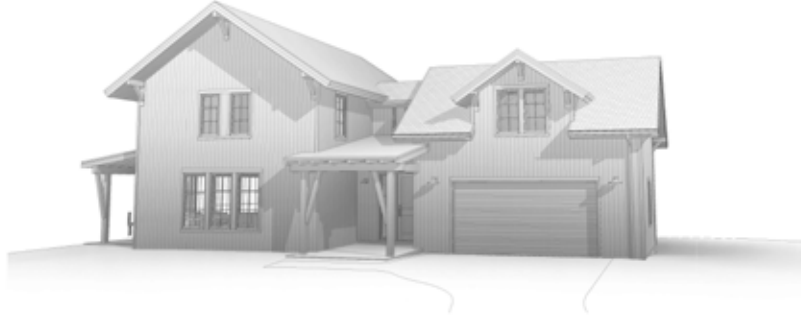
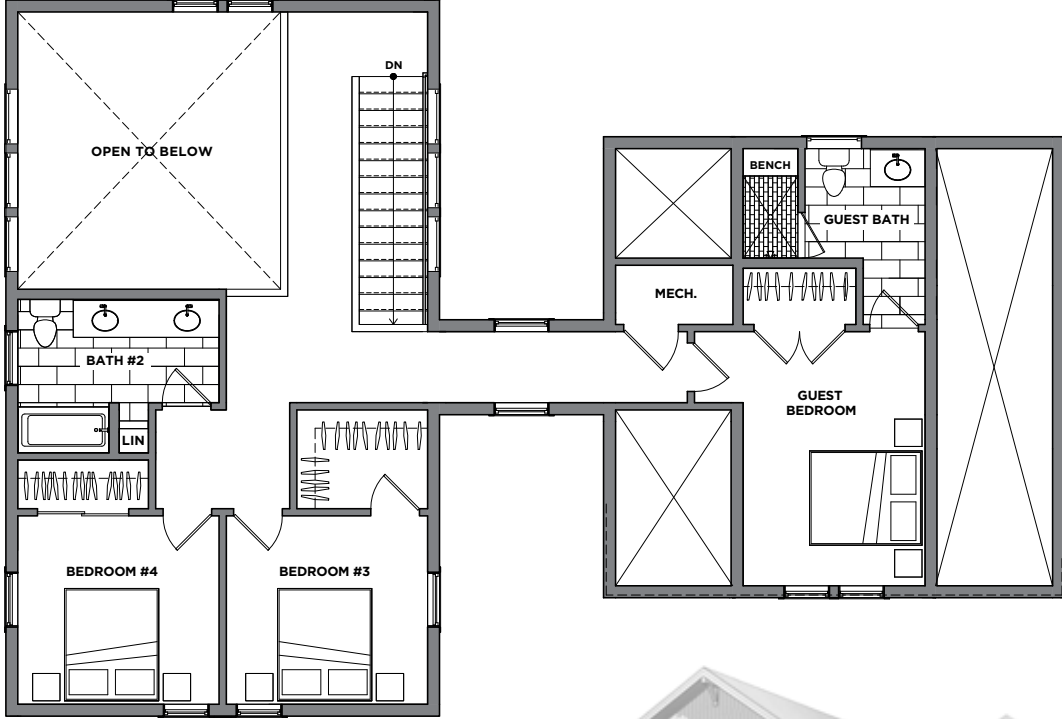


All elements, designs, plans, renderings, prices, and any other information presented hereon are for informational purposes only, are not guaranteed, and are subject to change or elimination without prior notice. Maps, floor plans, and models are not to scale, and all measurements are approximate. Views are not guaranteed. Verify all items before purchasing. The project has not been registered under various state laws, and this material is not addressed to residents in any states which require registration.



# HUNTER'S *View*

## UPPER LEVEL



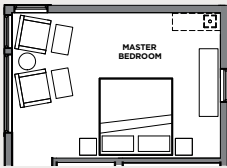
All elements, designs, plans, renderings, prices, and any other information presented hereon are for informational purposes only, are not guaranteed, and are subject to change or elimination without prior notice. Maps, floor plans, and models are not to scale, and all measurements are approximate. Views are not guaranteed. Verify all items before purchasing. The project has not been registered under various state laws, and this material is not addressed to residents in any states which require registration.

# ALTERNATE OPTIONS

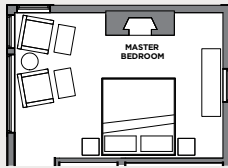
Make It Your Own

With numerous room and feature additions to choose from, you can create a home that perfectly suits your lifestyle.

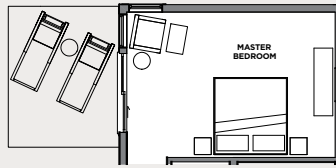
## ALTERNATE OPTIONS / MAIN LEVEL



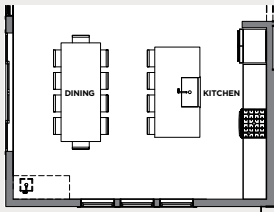
OPTIONAL COFFEE BAR



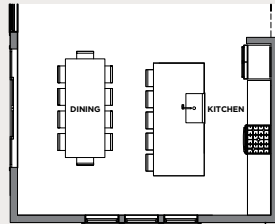
OPTIONAL MASTER BEDROOM FIREPLACE



OPTIONAL MASTER BEDROOM PATIO



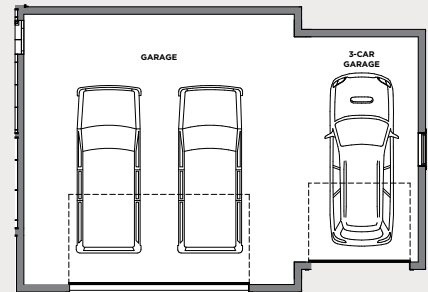
OPTIONAL WETBAR



OPTIONAL ENLARGED KITCHEN ISLAND

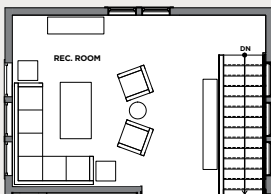


OPTIONAL MUDROOM BUILT-IN BENCH



OPTIONAL THIRD CAR GARAGE

## ALTERNATE OPTION / UPPER LEVEL



OPTIONAL REC ROOM

All elements, designs, plans, renderings, prices, and any other information presented hereon are for informational purposes only, are not guaranteed, and are subject to change or elimination without prior notice. Maps, floor plans, and models are not to scale, and all measurements are approximate. Views are not guaranteed. Verify all items before purchasing. The project has not been registered under various state laws, and this material is not addressed to residents in any states which require registration.



# HUNTER'S *View*



## ROOSEVELT

2,875 SF / 4 Bed / 3.5 Bath



## SITE PLAN

PHASE 1 : ARTIST RENDERING



Frost Creek's Clubhouse and Restaurant

### Your New Base Camp

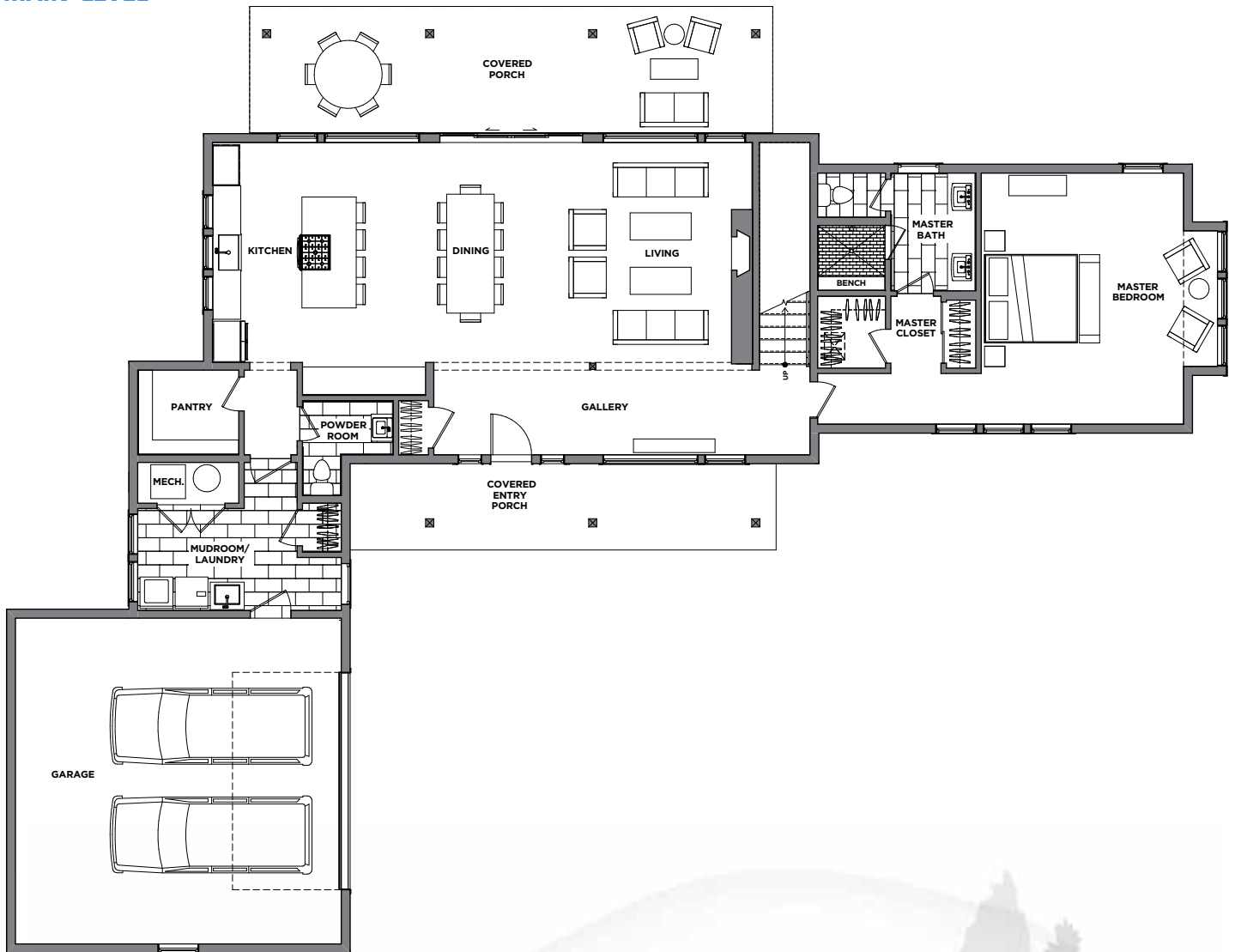
Nestled on 81 acres of land, surrounded by pristine, protected wilderness, awaits an extraordinary living experience. Hunter's View - Frost Creek's newest real estate offering - is a thoughtfully designed neighborhood of new construction homes, with direct access to the many year-round activities that both Frost Creek and the surrounding Vail Valley have to offer. With generous lot sizes up to an acre or more, Hunter's View is designed to foster community while maintaining the serenity that defines life at Frost Creek.



# ROOSEVELT

2,875 SF / 4 Bed / 3.5 Bath

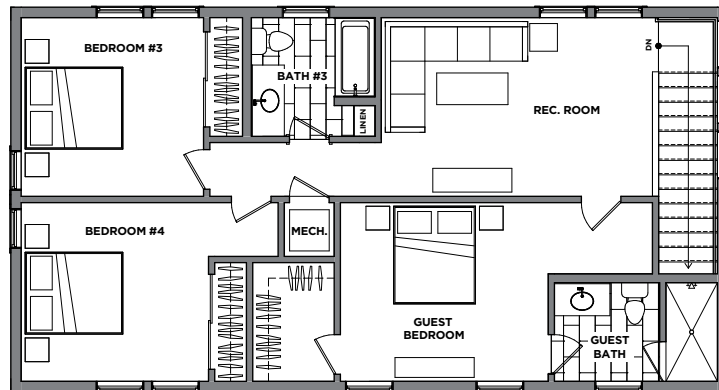
## MAIN LEVEL



All elements, designs, plans, renderings, prices, and any other information presented hereon are for informational purposes only, are not guaranteed, and are subject to change or elimination without prior notice. Maps, floor plans, and models are not to scale, and all measurements are approximate. Views are not guaranteed. Verify all items before purchasing. The project has not been registered under various state laws, and this material is not addressed to residents in any states which require registration.



## UPPER LEVEL

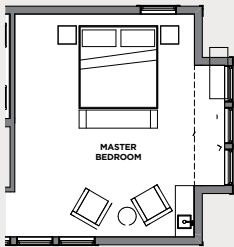


# ALTERNATE OPTIONS

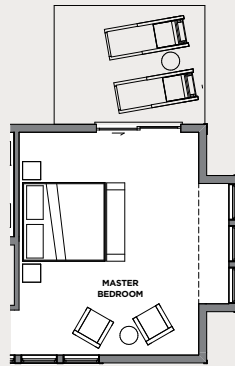
## Make It Your Own

With numerous room and feature additions to choose from, you can create a home that perfectly suits your lifestyle.

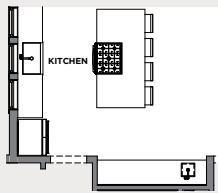
## MAIN LEVEL



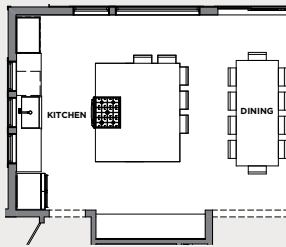
OPTIONAL COFFEE BAR



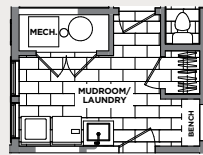
OPTIONAL MASTER BEDROOM PATIO



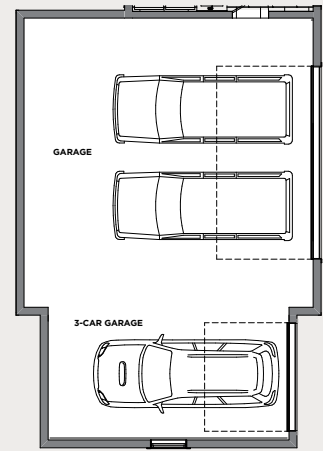
OPTIONAL WET BAR



OPTIONAL ENLARGED KITCHEN ISLAND



OPTIONAL MUDROOM BUILT-IN BENCH



OPTIONAL THIRD CAR GARAGE



# HUNTER'S *View*



## SCOUT

2,300 SF / 3 Bed / 2.5 Bath



## SITE PLAN

PHASE 1 : ARTIST RENDERING



Frost Creek's Clubhouse and Restaurant

### Your New Base Camp

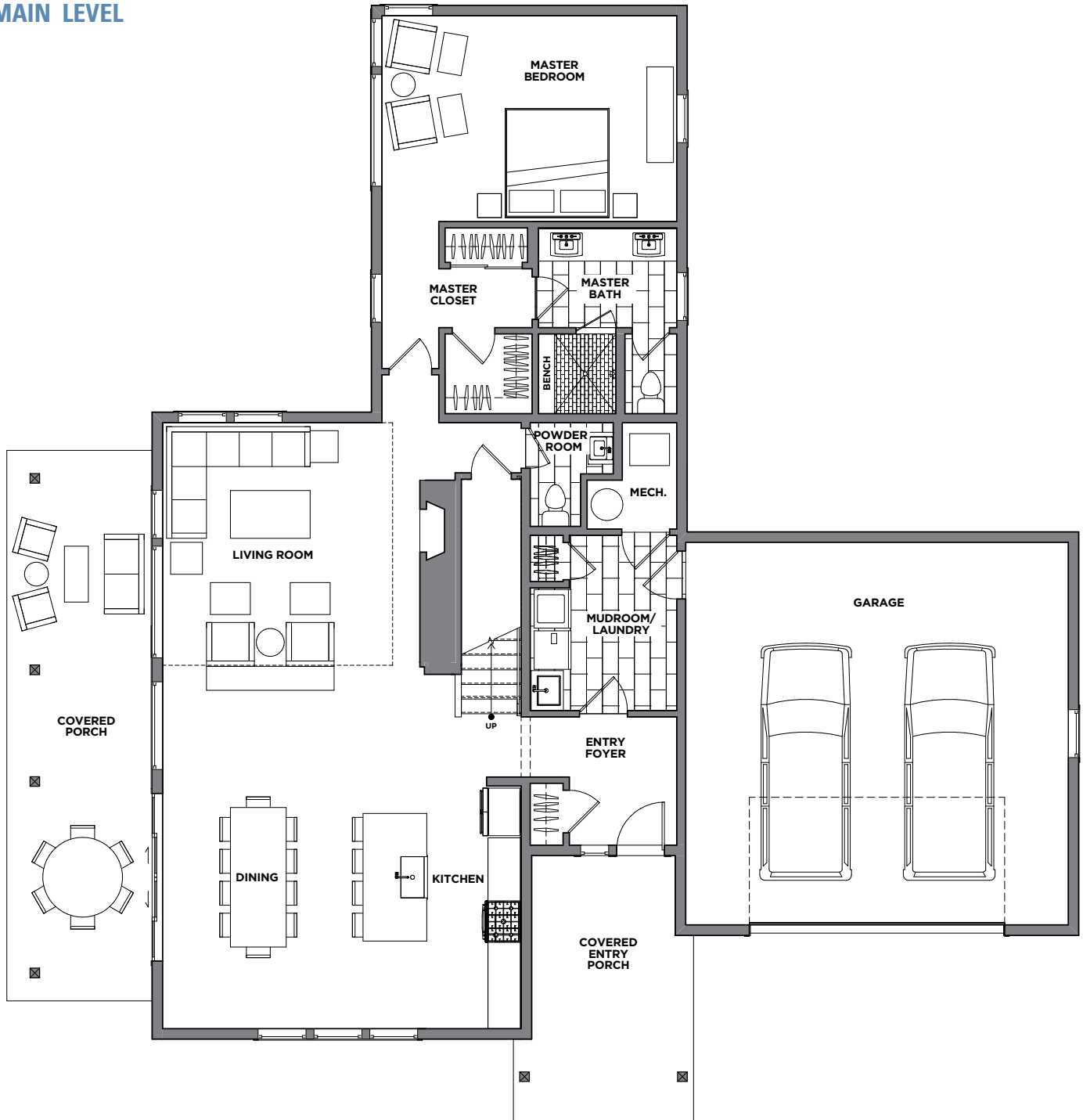
Nestled on 81 acres of land, surrounded by pristine, protected wilderness, awaits an extraordinary living experience. Hunter's View - Frost Creek's newest real estate offering - is a thoughtfully designed neighborhood of new construction homes, with direct access to the many year-round activities that both Frost Creek and the surrounding Vail Valley have to offer. With generous lot sizes up to an acre or more, Hunter's View is designed to foster community while maintaining the serenity that defines life at Frost Creek.



# SCOUT

2,300 SF / 3 Bed / 2.5 Bath

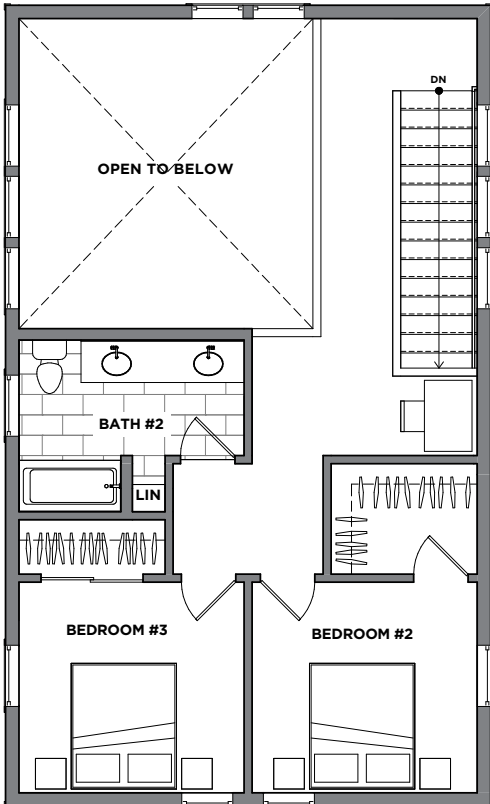
## MAIN LEVEL



All elements, designs, plans, renderings, prices, and any other information presented hereon are for informational purposes only, are not guaranteed, and are subject to change or elimination without prior notice. Maps, floor plans, and models are not to scale, and all measurements are approximate. Views are not guaranteed. Verify all items before purchasing. The project has not been registered under various state laws, and this material is not addressed to residents in any states which require registration.

# HUNTER'S *View*

## UPPER LEVEL



All elements, designs, plans, renderings, prices, and any other information presented hereon are for informational purposes only, are not guaranteed, and are subject to change or elimination without prior notice. Maps, floor plans, and models are not to scale, and all measurements are approximate. Views are not guaranteed. Verify all items before purchasing. The project has not been registered under various state laws, and this material is not addressed to residents in any states which require registration.

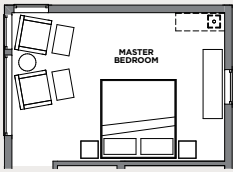


# ALTERNATE OPTIONS

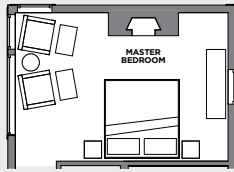
Make It Your Own

With numerous room and feature additions to choose from, you can create a home that perfectly suits your lifestyle.

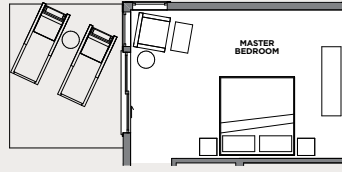
## ALTERNATE OPTIONS / MAIN LEVEL



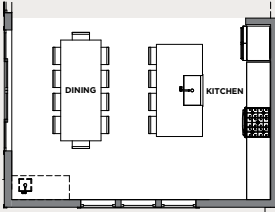
OPTIONAL COFFEE BAR



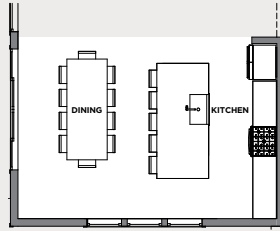
OPTIONAL MASTER BEDROOM FIREPLACE



OPTIONAL MASTER BEDROOM PATIO



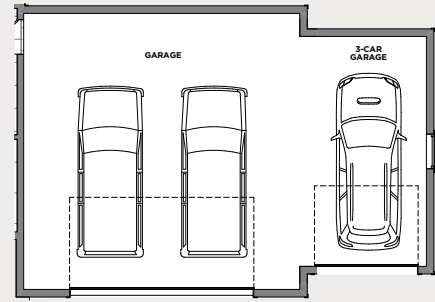
OPTIONAL WETBAR



OPTIONAL ENLARGED KITCHEN ISLAND

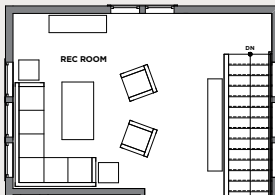


OPTIONAL MUDROOM BUILT-IN BENCH



OPTIONAL THIRD CAR GARAGE

## ALTERNATE OPTION / UPPER LEVEL



OPTIONAL REC ROOM



For those who are ready to make the transition to mountain living at Frost Creek, but don't want to build a full custom home, Hunter's View is the perfect combination of personalization and convenience. With three unique layouts and numerous additions to choose from, no two residences in the development will be exactly the same. The homes at Hunter's View have been carefully positioned in order to ensure that each one has panoramic views of the surrounding landscape - residents will wake up each morning to the serene sight of the Rocky Mountains and Brush Creek Valley.

#### HIGHLIGHTS

- Spacious open concept floorplan and main floor master bedrooms
- Regional materials that honor the landscape and history of the area
- Refined mountain modern interiors with luxury finish options
- Large windows for ample natural light and large sliding exterior doors to connect indoor and outdoor spaces
- Turnkey, low-maintenance living in the heart of Brush Creek Valley
- Surrounded by pristine federally protected lands and steps from Brush Creek

## HUNTER'S *View*



#### FOR MORE INFORMATION CONTACT:

Katherine "Kakie" Holland  
DIRECTOR OF SALES, GRI, CNE  
970.455.3072 (O) / 970.319.5585 (M)  
kholland@frostcreek.com

1094 Frost Creek Dr., Eagle, CO 81631

Mailing: PO Box 659, Eagle,  
Colorado 81631

[www.frostcreek.com/huntersview](http://www.frostcreek.com/huntersview)