



**Your New Base Camp** : Frost Creek's Clubhouse and Restaurant



# HUNTER'S *View*



**Available to Close - September 2023**, this newer Roosevelt Model completed February 2022, located in the prestigious private club setting at Frost Creek. Nestled in the secluded Brush Creek Valley just west of Vail, CO with spectacular views of the Sawatch Mountain Range, Coffin Mountain, and the Frost Creek Draw. Hunter's View is a new subdivision within Frost Creek. Located on the award-winning golf course designed by Tom Weiskopf, and surrounded by countless outdoor activities, Hunter's View combines a close community feel and private club luxury, all while wrapped in the beauty of untouched Colorado wilderness.

### HIGHLIGHTS

- Completely Furnished with \$600K in additional Builder Upgrades, designer furnishings and additional landscaping
- Spacious open concept floorplan, with stunning 360-degree views of the trout stocked pond and Brush Creek Valley
- Main floor master bedroom, private master deck, oversized/heated 3-car garage
- The outside is an extension of the inside with Expansive Sierra Pacific windows and refined mountain modern interiors with luxury finishes.



## HUNTER'S *View*

**FOR MORE INFORMATION CONTACT:**

**Katherine "Kakie" Holland**

DIRECTOR OF SALES, GRI, CNE  
970.455.3072 (O) / 970.319.5585 (M)  
kholland@frostcreek.com

**Lynne Sandoval**

SALES EXECUTIVE  
970.455.3072 (O) / 303.551.2689 (M)  
lsandoval@FrostCreek.com

1094 Frost Creek Dr., Eagle, CO 81631

Mailing: PO Box 659, Eagle,  
Colorado 81631

[www.frostcreek.com/real-estate](http://www.frostcreek.com/real-estate)

# 224 HUNTERS VIEW LANE

**2,874 SF / 4 Bed / 3.5 Bath**

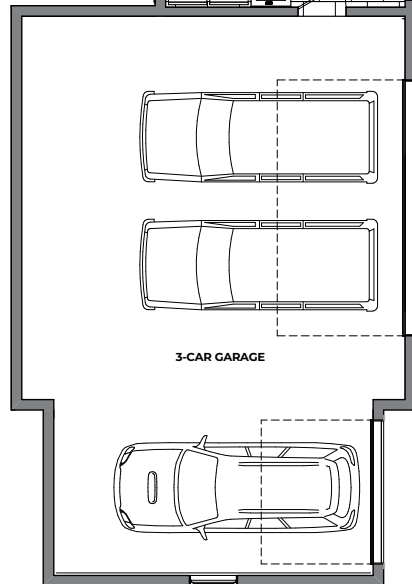
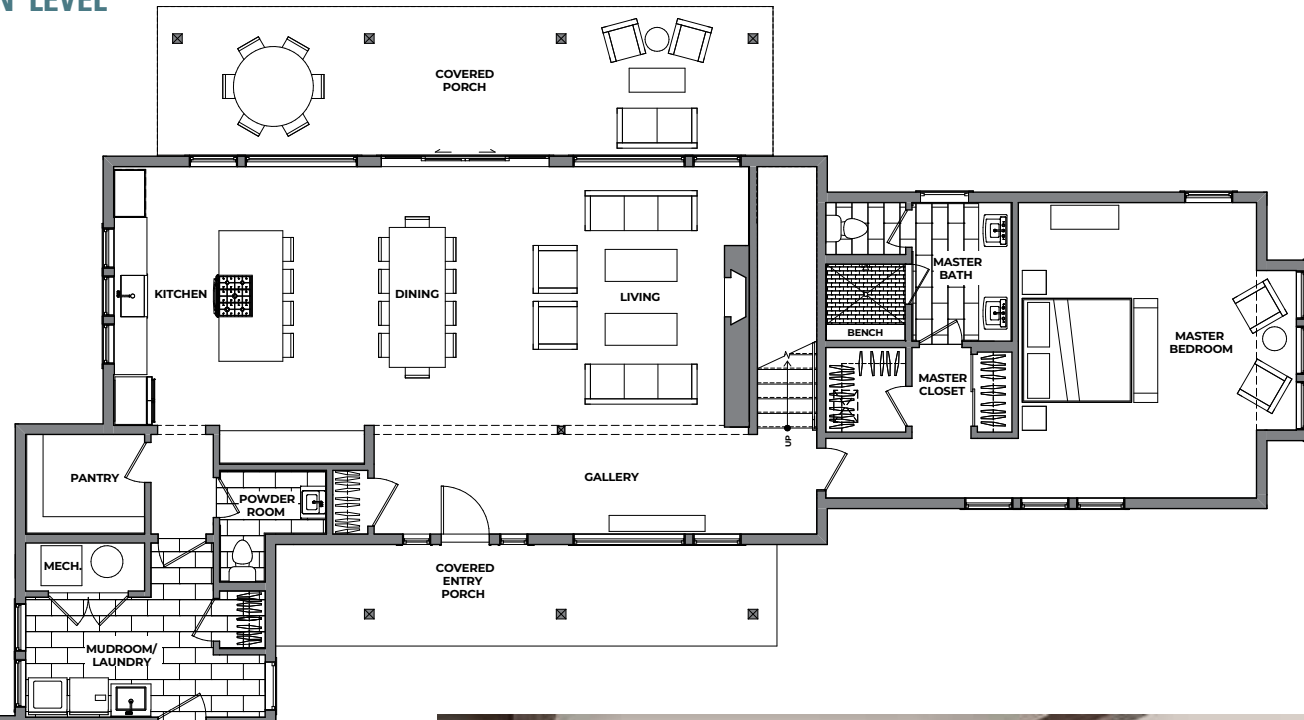


# 224 HUNTERS VIEW LANE / ROOSEVELT

2,874 SF / 4 Bed / 3.5 Bath

# HUNTER'S View

## MAIN LEVEL



## UPPER LEVEL

