



# HUNTER'S *View*



**SPECTACULAR VIEW HOME** - Completed in June 2022 this 4 bedroom, 3.5 bath residence sits on a large .738-acre homesite, orientated purposefully for a stunning private setting with unobstructed views of the spectacular Mt. Thomas/Sawatch Range.

Main Level living is greeted by the gorgeous Great Room's 17 ft ceilings highlighted by the floor to ceiling charcoal limestone wall surrounding the gas linear fireplace. Powder coated railings overlook the Great Room which creates additional airiness to this already open floor plan.

The kitchen invites everyone to congregate with its oversized enlarged island. Sierra Pacific floor-to-ceiling windows allow for a seamless transition between the interior tranquility and the outdoor natural features.

The second level ties together 360 degrees views from the 3 additional bedrooms, and the 4th bedroom enjoying the privacy of a separated area of the house with a special vaulted ceiling and ensuite bath.



## HUNTER'S *View*

FOR MORE INFORMATION CONTACT:

**Katherine "Kakie" Holland**

DIRECTOR OF SALES, GRI, CNE  
970.455.3072 (O) / 970.319.5585 (M)  
kholland@frostcreek.com

**Lynne Sandoval**

SALES EXECUTIVE  
970.455.3072 (O) / 303.551.2689 (M)  
lsandoval@frostcreek.com

1094 Frost Creek Dr., Eagle, CO 81631

Mailing: PO Box 659, Eagle,  
Colorado 81631

[www.frostcreek.com/real-estate](http://www.frostcreek.com/real-estate)

# 333 HUNTERS VIEW LANE

2651 SF / 4 Bed / 3.5 Bath  
\$2,239,000



# 333 HUNTERS VIEW LANE / BORAH

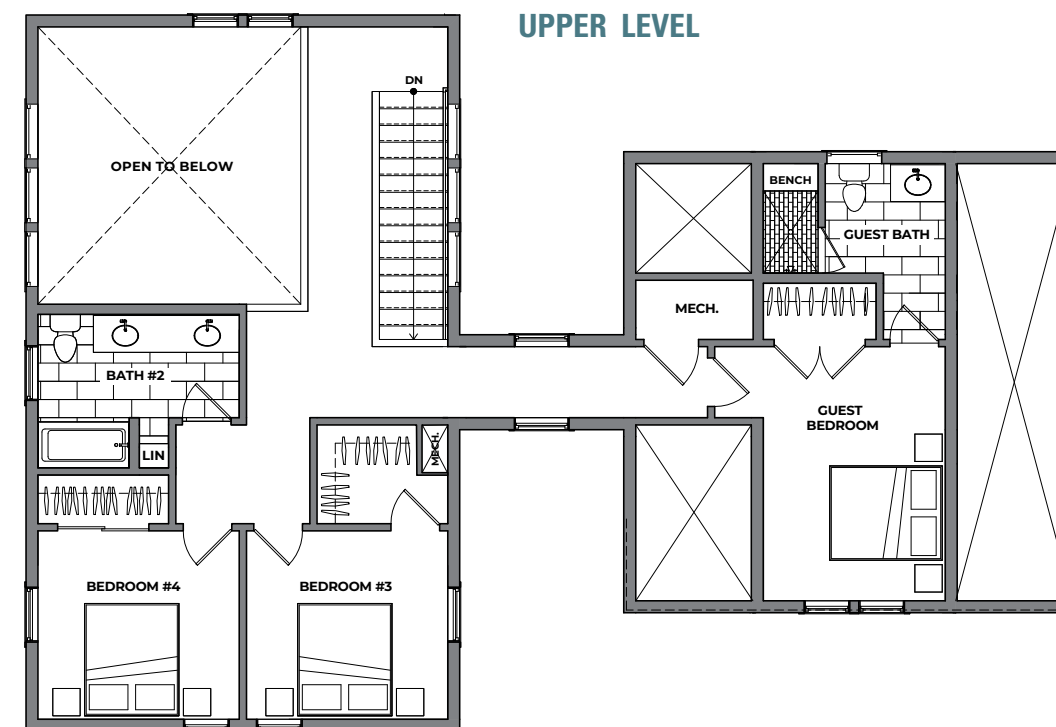
2,651 SF / 4 Bed / 3.5 Bath / \$2,239,000

## HUNTER'S View

### MAIN LEVEL



### UPPER LEVEL



### WHAT WE LOVE ABOUT THIS HOME

- Open Floor Plan with 17 ft Ceilings in the Great Room with Powder Coated Interior Stair Rails
- Floor to Ceiling Charcoal Limestone Surround highlighting the Linear Fireplace
- Upgraded Bosch Benchmark Appliances and Enlarged Kitchen Island
- Unobstructed Southern Views of Mt. Thomas/Sawatch Range
- Extended Outdoor Patio Living Space with Outdoor Grill/Refrigerator
- Epoxy Floor Finished, Oversized Heated Garage

Maps, floor plans, and models are not to scale, and all measurements are approximate. Verify all items before purchasing.