



HUNTER'S *View*



434 HUNTERS VIEW LANE

Lot 114 / 2,874 SF / 4 Bed / 3.5 Bath



434 HUNTERS VIEW LANE / ROOSEVELT

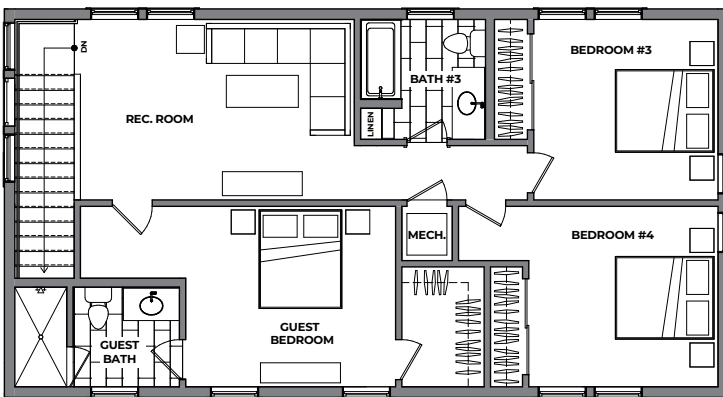
Lot 114 / 2,874 SF / 4 Bed / 3.5 Bath

MAIN LEVEL



HUNTER'S *View*

UPPER LEVEL



WHAT WE LOVE ABOUT THIS HOME:

- PREMIUM Views looking South onto the Twin Ponds, Mt Thomas, Coffin Mt and Frost Creek Draw
- Gourmet Kitchen with Wolf/Subzero Appliances including Beverage Refrigerator, Enlarged Kitchen Island, and Butler's Pantry
- Expanded Outdoor Patio from Great Room and Master Bedroom accessing above ground Hot Tub with Additional Landscaping
- Air Conditioned, Fire Suppression System throughout





This stunning home, built in 2021 on .642 acres, is nestled in the exclusive Hunter's View Community of Frost Creek. Located at the end of a shared driveway, it offers breathtaking views of the Upper and Lower Ponds and Brush Creek Valley. The spacious layout includes 4 bedrooms, 3.5 baths, and a 3-car garage with 2 oversized bays, all designed for convenient main-level living. The extended patio features landscaping, an outdoor hot tub, and a large dog run, enhancing outdoor enjoyment.

Inside, the gourmet kitchen is a standout with premium Wolf/Subzero appliances, enlarged island, glass-front cabinets, and a walk-in pantry with a butler's station. This exceptional residence comes partially furnished with designer pieces, including a live-edge dining table and a baby grand piano. The master bedroom and great room provide access to the upgraded patio, perfect for starlit evenings by the firepit. The second level includes 3 bedrooms, 2 bathrooms, and a den. The heated garage features custom cabinets and built-in workspace. Hunter's View homes seamlessly blend indoor and outdoor living with expansive windows and modern amenities. Frost Creek membership is required for all homeowners, with approval necessary for at least a Resident Social Membership.



HUNTER'S *View*

FOR MORE INFORMATION CONTACT:

Lynne Sandoval

DIRECTOR OF SALES

970.455.3072 (O) / 303.551.2689 (M)

lsandoval@FrostCreek.com

1094 Frost Creek Dr., Eagle, CO 81631

Mailing: PO Box 659, Eagle,
Colorado 81631

www.frostcreek.com/real-estate