



# HUNTER'S *View*



## 140 HUNTERS VIEW LANE

Lot 107 / 2,874 SF / 4 Bed / 3.5 Bath / Partially Furnished



# 140 HUNTERS VIEW LANE / ROOSEVELT

Lot 107 / 2,874 SF / 4 Bed / 3.5 Bath / Partially Furnished

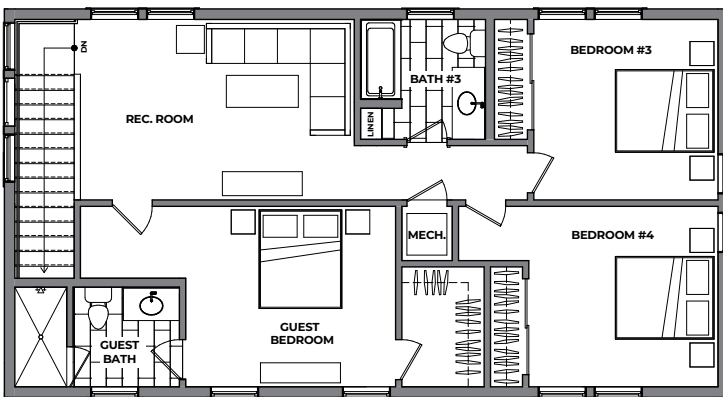
## MAIN LEVEL





# HUNTER'S *View*

## UPPER LEVEL



### WHAT WE LOVE ABOUT THIS HOME:

**Stunning Views:** Enjoy breathtaking mountain vistas from the front patio and serene pond views from the backyard. This home offers breathtaking scenery at every turn.

**Spacious & Functional:** With an oversized homesite, open outdoor spaces, and thoughtfully designed interiors, this home perfectly balances privacy, functionality, and elegance.

**Prime Outdoor Living:** Close to outdoor recreation, the Frost Creek Membership offers an ideal location for active lifestyles and serene living.

\*Frost Creek membership is required for all homeowners.





**Experience the Frost Creek Lifestyle:** This beautifully crafted, move-in-ready home offers the perfect blend of elegance, comfort, and breathtaking scenery. Nestled on a 1.3-acre lot, this 4-bedroom, 3.5-bath residence is designed for both relaxation and entertaining.

Inside, enjoy an open-concept living area with beautiful tongue-and-groove wood ceilings and decorative beams. The modern kitchen features Bosch Benchmark appliances, a large island with quartz countertops, a spacious pantry, and a custom wet bar—ideal for gatherings. The living room centers around a limestone-accented gas fireplace, creating a warm, inviting atmosphere.

The main-floor primary suite includes a built-in window bench and private access to a patio with a hot tub, perfect for unwinding with mountain views. Upstairs, a versatile den offers additional living space. The secondary primary bedroom has an en-suite bath, while two more bedrooms share a full bathroom—great for family or guests.

The three-car heated garage includes custom cabinets and a dog wash station. Enjoy panoramic views of Mt. Thomas, Coffin Mountain, Castle Peak, and the Sawatch Range from multiple outdoor spaces. This exceptional home combines luxury, views, and thoughtful features for an extraordinary lifestyle.



## HUNTER'S *View*

FOR MORE INFORMATION CONTACT:

**Lynne Sandoval**

DIRECTOR OF SALES

970.455.3072 (O) / 303.551.2689 (M)

lsandoval@FrostCreek.com

1094 Frost Creek Dr., Eagle, CO 81631

Mailing: PO Box 659, Eagle,  
Colorado 81631

[www.frostcreek.com/real-estate](http://www.frostcreek.com/real-estate)