



RED BLUFFS WAY

— CUSTOM HOMES —



0377 RED BLUFFS WAY – Envision a thoughtfully designed custom residence offering 4,016 total square feet, including 2,996 square feet of main level living space. The main level features a stunning primary bedroom suite and an additional ensuite bedroom, both with convenient patio access. The second story adds 1,020 square feet with two more bedrooms, each with their own ensuite bathroom, providing comfort and privacy for family and guests. A heated 3-car garage enhances practicality. Each Frost Creek home is equipped with state-of-the-art fire suppression systems for peace of mind.

Located on an award-winning golf course designed by Tom Weiskopf and surrounded by limitless outdoor activities, Frost Creek provides a unique fusion of community spirit and private club luxury, all enveloped in the breathtaking beauty of Colorado's untouched wilderness. This is more than a home; it's a lifestyle tailored to your dreams.

*Please note that all homeowners and residents must be approved members of Frost Creek.



FOR MORE INFORMATION CONTACT:

Lynne Sandoval

DIRECTOR OF SALES

970.455.3072 (O) / 303.551.2689 (M)

lsandoval@FrostCreek.com

1094 Frost Creek Dr., Eagle, CO 81631

Mailing: PO Box 659, Eagle, CO 81631

www.frostcreek.com/real-estate



0377 RED BLUFFS WAY

Custom Home 88 / 4 Bed / 5 Bath / 4,016 SF



0377 RED BLUFFS WAY

Custom Home 88 / 4 Bed / 5 Bath / 4,016 SF

RED BLUFFS WAY

— CUSTOM HOMES —

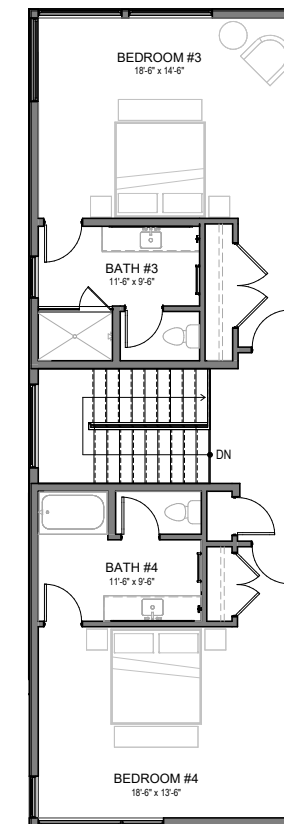
MAIN LEVEL



HIGHLIGHTS:

- **Designed for Modern Living:** Thoughtfully crafted floor plans balance comfort, function, and style for today's lifestyle.
- **Turnkey Custom Opportunity:** Floor plans are designed and approved, saving you the time and stress of starting from scratch.
- **Personalization Made Easy:** Choose from high quality standard finishes and a curated selection of builder upgrades.
- **Flexible Customization:** Additional custom design changes are possible for buyers seeking a truly bespoke home.
- **Streamlined Build Process:** You will have a dedicated construction liaison to handhold you through the process and help you to tailor every detail to your vision.

UPPER LEVEL



WHAT WE LOVE ABOUT THIS HOME:

Set on a generous 1.329-acre homesite, the Grand Room welcomes you with expansive doors that seamlessly connect to an outdoor patio, complete with a gas fire pit and built-in grill, perfect for entertaining or enjoying quiet evenings under the stars. Each home embodies the essence of Frost Creek, showcasing natural textures, warm materials, and clean architectural lines that create an inviting ambiance, seamlessly blending comfort with sophistication.

