



RED BLUFFS WAY

— CUSTOM HOMES —



0333 RED BLUFFS WAY – Envision a stunning 4-bedroom, 4.5-bath masterpiece set on 1.161 acres, providing 3,890 sq. ft. of exquisite main-level living, ideal for families and entertainers alike.

As you enter the magnificent Great Room, you are greeted by a breathtaking expansive door that seamlessly opens to a beautifully crafted outdoor patio. Complete with a gas fire pit and built-in grill, this space is perfect for hosting gatherings while enjoying stunning views of Castle Peak to the north and the picturesque #17 fairway and pond.

Situated on an award-winning golf course designed by Tom Weiskopf and surrounded by endless outdoor activities, Frost Creek offers a unique blend of community spirit and private club luxury, all wrapped in the breathtaking beauty of untouched Colorado wilderness, creating the perfect backdrop for your dream lifestyle.

*Please note that all homeowners and residents must be approved members of Frost Creek.



FOR MORE INFORMATION CONTACT:

Lynne Sandoval

DIRECTOR OF SALES

970.455.3072 (O) / 303.551.2689 (M)

lsandoval@FrostCreek.com

1094 Frost Creek Dr., Eagle, CO 81631

Mailing: PO Box 659, Eagle, CO 81631

www.frostcreek.com/real-estate



0333 RED BLUFFS WAY

Custom Home 89 / 4 Bed / 4.5 Bath / 3,890 SF



0333 RED BLUFFS WAY

Custom Home 89 / 4 Bed / 4.5 Bath / 3,890 SF

RED BLUFFS WAY

— CUSTOM HOMES —

MAIN LEVEL



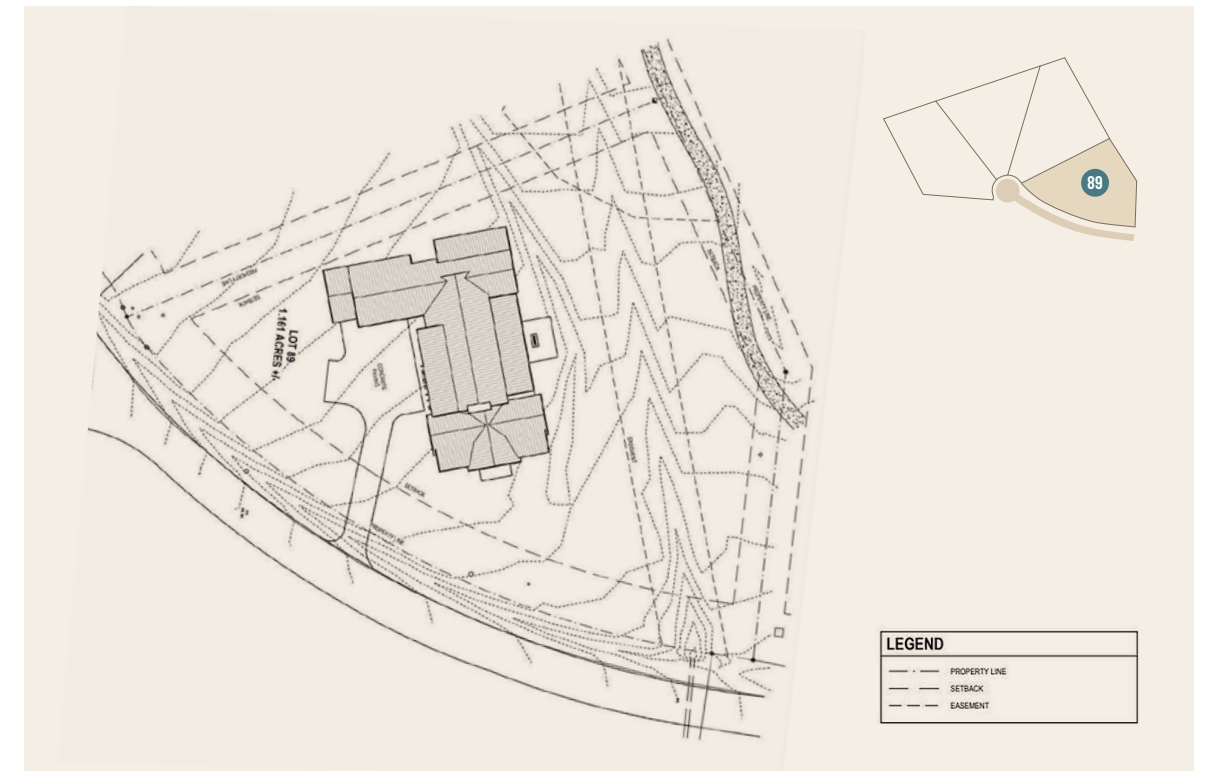
HIGHLIGHTS:

- **Designed for Modern Living:** Thoughtfully crafted floor plans balance comfort, function, and style for today's lifestyle.
- **Turnkey Custom Opportunity:** Floor plans are designed and approved, saving you the time and stress of starting from scratch.
- **Personalization Made Easy:** Choose from high quality standard finishes and a curated selection of builder upgrades.
- **Flexible Customization:** Additional custom design changes are possible for buyers seeking a truly bespoke home.
- **Streamlined Build Process:** You will have a dedicated construction liaison to handhold you through the process and help you to tailor every detail to your vision.



WHAT WE LOVE ABOUT THIS HOME:

This home embodies the spirit of Frost Creek, showcasing natural textures, warm materials, and clean architectural lines that create an inviting atmosphere, perfectly balancing comfort and sophistication. Enjoy expansive indoor spaces that flow effortlessly into inviting outdoor areas, providing ample opportunities for relaxation and entertainment.



Maps, floor plans, and models are not to scale, and all measurements are approximate. Verify all items before purchasing.



0333 RED BLUFFS WAY

Custom Home 89 / 4 Bed / 4.5 Bath / 3,890 SF

RED BLUFFS WAY

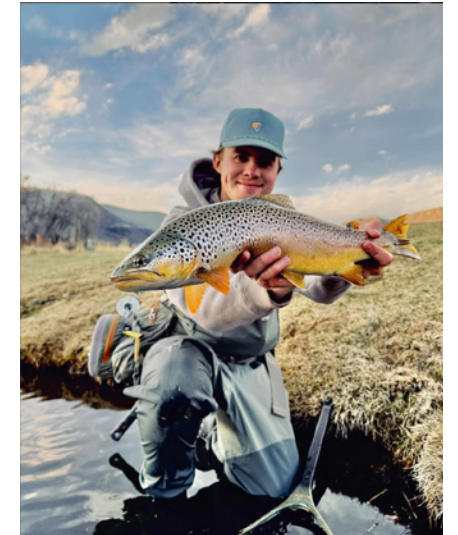
— CUSTOM HOMES —

MAIN LEVEL



HIGHLIGHTS:

- **Designed for Modern Living:** Thoughtfully crafted floor plans balance comfort, function, and style for today's lifestyle.
- **Turnkey Custom Opportunity:** Floor plans are designed and approved, saving you the time and stress of starting from scratch.
- **Personalization Made Easy:** Choose from high quality standard finishes and a curated selection of builder upgrades.
- **Flexible Customization:** Additional custom design changes are possible for buyers seeking a truly bespoke home.
- **Streamlined Build Process:** You will have a dedicated construction liaison to handhold you through the process and help you to tailor every detail to your vision.



WHAT WE LOVE ABOUT THIS HOME:

This home embodies the spirit of Frost Creek, showcasing natural textures, warm materials, and clean architectural lines that create an inviting atmosphere, perfectly balancing comfort and sophistication. Enjoy expansive indoor spaces that flow effortlessly into inviting outdoor areas, providing ample opportunities for relaxation and entertainment.



Maps, floor plans, and models are not to scale, and all measurements are approximate. Verify all items before purchasing.